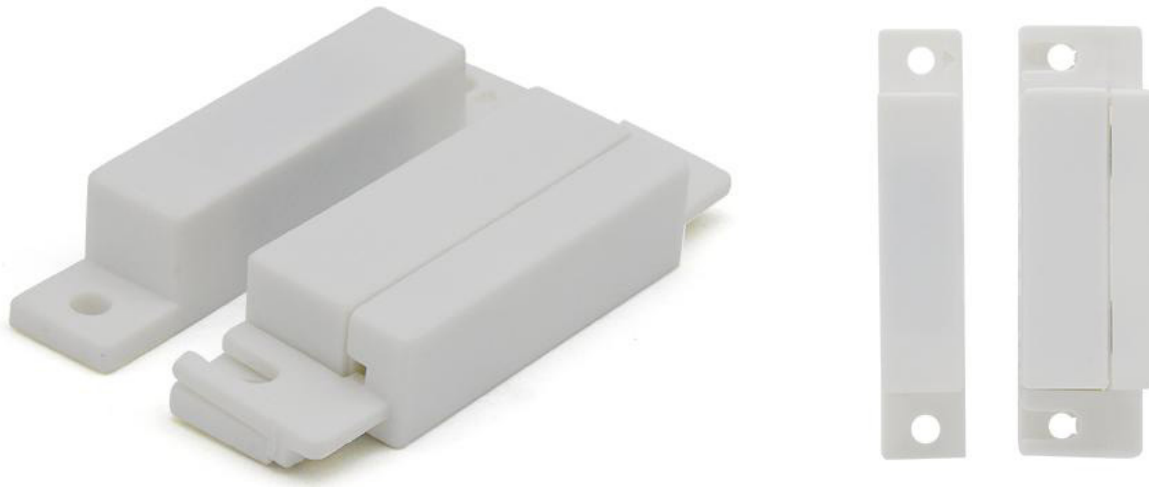


Giganet Door contact is a small type accessory , specialized developing to monitor door status,which composites of two parts. The first part has leads, installed on stable door with controller, the second part has different magnetic polarity of the first part without leads, installing on the movable windows and aligning with the first part.



Specifications

Technical parameters		
Voltage	12V	
Running current	< 15mA	
Static current	3mA	
Running frequency	315MHz	
Frequency deviation	±0.2MHz	
Power	>15mw	
Distance	>100m	
Time	1.5S-3S	
Magnetic valid distance	Pull in-15mm ; release-30mm	
Act distance	30mm	
Power specification		
Input power(DC)	12V	
Running current	< 15mA	
Environment		
Running Environment	Temp	0° C-70° C
	Relative humidity	10% ~ 85%

Ordering Information

Part Number	Description
GN-RC-77434	Giganet Door Contact Sensor

Accessories

Name	Quantity	Unit
Door Contact	1	Pair
Certificate	1	Piece
Screws	4	Piece