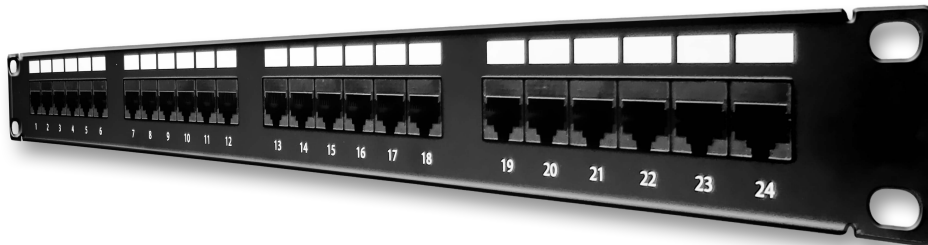


Product Overview

The Giganet 24 ports Cat 6A UUTP patch panel for 19" racks. The Giganet Cat 6A UUTP patch panels are designed to fit industry standard 19" cabinets. These fully compliant panels are simple to install and provide excellent performance at a great price.

Features and Benefits

- ROHS Compliant
- Numerical identification on all outlets
- Labeling fields with writeable surface
- Six port blocks for ease of management
- Rear Wire manager guide included
- IDC punch down termination
- Cage nuts included
- Color: Matt Black.

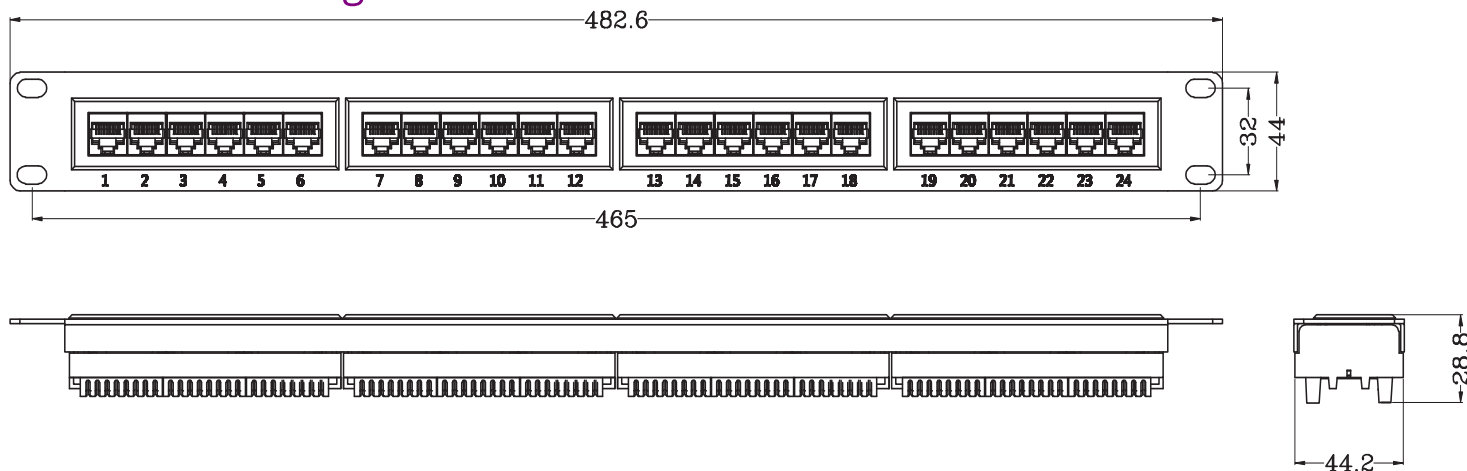


GN-C6A-UTP-PP-24

ORDERING INFORMATION

Part Number	Product Description
GN-C6A-UTP-PP-24	Giganet Category 6A UTP 24 Port 1U Patch Panel with Rear Wire Manager

Schematic Diagram



TYPE

1. 19" 24 Port Patch Panel
2. Color: Black
3. Dual IDC

ELECTRICAL:

1. Contact Resistance: 20m OHM
2. Insulation Resistance $\leq 500M$ OHM@100V DC
3. Withstand Voltage: DC100V AC700V RMS 60HZ, 1MIN
4. Giganet Category 6A Permanent Link: Conform to ANSI/EIA 568B.2-10

ENVIRONMENTAL:

1. Storage: $-40^{\circ}C \sim +70^{\circ}C$
2. Operation Temperature: $-40^{\circ}C \sim +70^{\circ}C$

MECHANICAL:

1. Metal Material: Cold Rolled Plate
2. IDC Material: PC UL94V-0, Accept 22-26AWG Solid Wire
3. Terminal: Phosphor Bronze, Tin Gold 3U"
4. RJ45 Contact Life: 750 Times
5. IDC Life: 250 Times