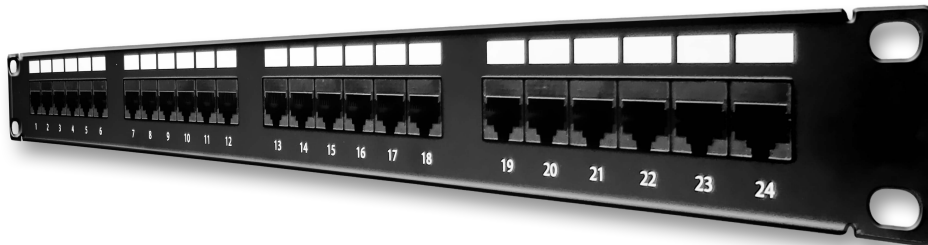


Product Overview

The Giganet Cat6A U/UTP loaded patch panels are designed to fit industry standard 19" cabinets. These fully compliant panels are simple to install and provide excellent performance at a great price.

Features and Benefits

- ROHS Compliant
- Numerical identification on all outlets
- Labeling fields with writeable surface
- Six port blocks for ease of management
- Rear Wire manager guide included
- IDC punch down termination
- Cage nuts included
- Color: Matt Black.

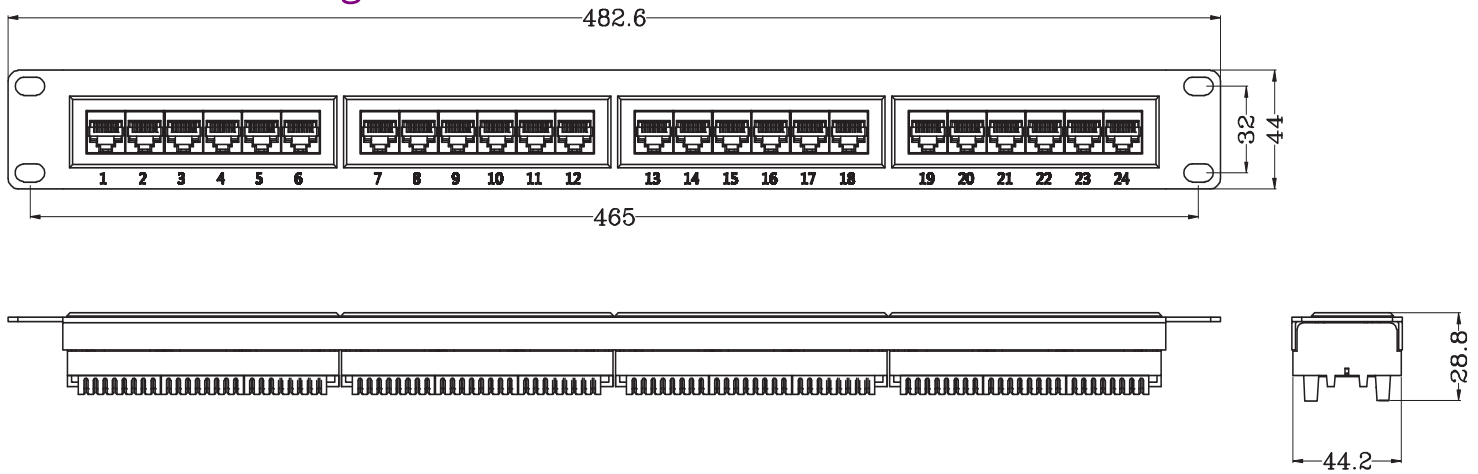


GN-C6A-UTP-PP-24

ORDERING INFORMATION

Product Description	Part Number
Giganet Category 6A UTP 24 Port Loaded 1U Patch Panel with Rear Wire Manager	GN-C6A-UTP-PP-24

Schematic Diagram



TYPE

1. 19" 24 Port Patch Panel
2. Color: Black
3. Dual IDC

ELECTRICAL:

1. Contact Resistance: 20m OHM
2. Insulation Resistance $\leq 500M$ OHM@100V DC
3. Withstand Voltage: DC100V AC700V RMS 60HZ, 1MIN
4. Giganet Category 6A Permanent Link: Conform to ANSI/EIA 568B.2-10

ENVIRONMENTAL:

1. Storage: $-40^{\circ}\text{C} \sim +70^{\circ}\text{C}$
2. Operation Temperature: $-40^{\circ}\text{C} \sim +70^{\circ}\text{C}$

MECHANICAL:

1. Metal Material: Cold Rolled Plate
2. IDC Material: PC UL94V-0, Accept 22-26AWG Solid Wire
3. Terminal: Phosphor Bronze, Tin Gold 3U"
4. RJ45 Contact Life: 750 Times
5. IDC Life: 250 Times