

Part Number: GN-IR-3PH-008A

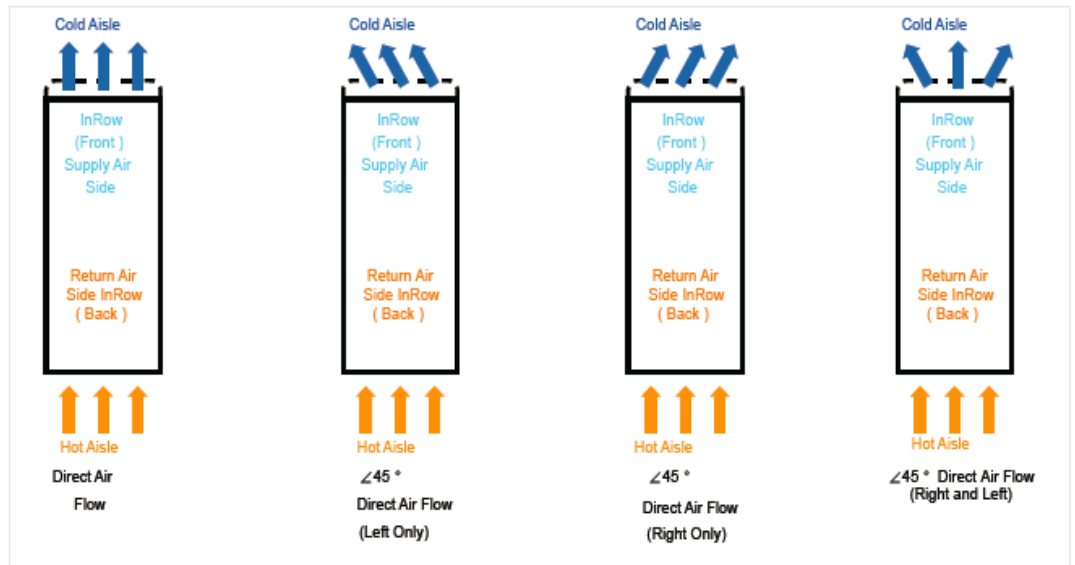
### FEATURES

- No need to build server room
- 3 hours rapid deploy, put in use immediately with power on
- Integrated intelligent design, integrated with cooling, UPS and battery system
- 365x24h no guard
- Operation cost saving, energy consumption reduction more than 30%



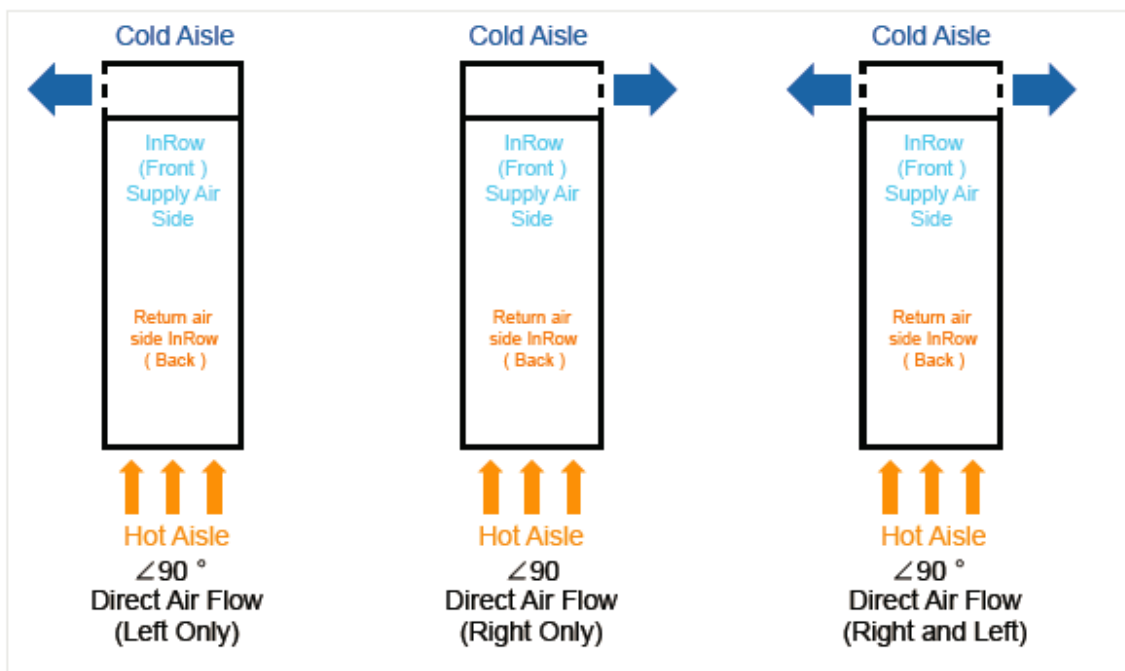
### Supply Air Configuration I

Physical Data (mm): 300/600 (width)x1000~1200 (depth)x2000 (height)



### Configuration II

Physical Data (mm): 300/600 (width)x1000~1200 (depth)x2000 (height)



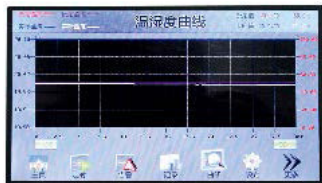
# COOLING SYSTEMS

## Giganet 3Phase 8.5 Kw Inrow Cooling

### Features of Giganet In-Row-based Cooling Unit

#### Precision Control

- Advanced EVO controller, air flow and cooling capacity are controlled precisely according to actual demand.
- Equipped with EC fan and inverter compressor for best effect and lowest consumption
- Total energy consumption could be effectively reduced on the basis of effective cooling with multiple control algorithm by calculating according to the highest temperature and average temperature.



#### Electronic Expansion Valve

- Adjust the throttle of valve smoothly and combine with the EC compressor to save the energy
- Wide range of operations, help reducing the over-heat degree and improve the EER
- Realize the precise matching of cooling capacity and heat load
- Quick response, realize the precise cooling.



#### High Reliability

- All components are strictly certified
- Factory acceptance test for each unit
- EMI & EMS compliance with EU standards
- Complete protection and alarm for cooling system and electrical
- International brand components



#### Significant Energy Saving

- DC inverter compressor: frequency adjusted dynamically, variable capacity. 20% energy saving than AC inverter compressor, 50% energy saving than constant speed compressor.
- Electronic Expansion Valve: adjust the over-heat of cooling system precisely.
- EC fan: airflow could be adjusted continuously, 30% energy saving than AC fan.
- Low startup current, UPS as reserve power supply.



Parameter Model	GN-IR-3PH-008A
<b>Cooling system</b>	
Compressor Type	Frequency conversion
Total Cooling Capacity kW	8.5
Sensible Cooling Capacity kW	8.5
Refrigerant	R410A
Airflow-CMH	1600
Heating Capacity kW	6
Humidifying Capacity kg/h	1
Width-mm	1500
Depth-mm	1200+300 (optional)
Height-mm	2000
<b>UPS</b>	
Power Capacity kVA	10
Working method	Double switch technology
Input / Output voltage	380V 3Ph
Battery capacity AH	24
Battery quantity	16pcs
Extended time-min	15(full load)
Longer extended time(more than 15 Min)	Equipped battery cabinets
Monitoring system	10 inch color touch screen, monitor and display parameters of cabinet, air conditioner, UPS, alarm and on / off state through RS485
Power supply and distribution	One main power supply;one mains power supply and one UPS;two optional UPS
PDU	Twenty C13 and four C19 sockets, installed vertically, can be customized
Emergency mode	Emergency ventilation
Temperature and humidity sensor	Cold and hot aisle temperature and humidity sensor
Fire protection	Fire linkage control system with fire detector
Lightning protection grade	Class C