

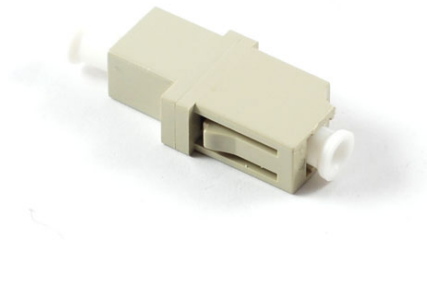
The Giganet offers a range SC and LC Adaptors The adaptors are available in simplex or duplex configurations with a zirconia or Phosphor Bronze sleeve for high precision alignment. These adaptors are comprised of a polymer outer body and inner assembly fitted with a precision alignment mechanism. These adaptors are precision made and manufactured to demanding specifications. The combination of a ceramic /phosphor bronze alignment sleeves and precision molded polymer housing provides consistent long-term mechanical and optical performance.

FEATURES

- Multimode and Singlemode variants
- Duplex and Simplex options
- High quality construction
- Suitable for both loose tube and tight buffered
- Strain relief boots included
- Ease of use
- High performance



SC Simplex



LC Simplex

PRODUCT INFORMATION

Part Number	Product Description
GN-SADPT-SC-MM	Giganet Simplex SC Multimode Adaptor
GN-SADPT-LC-MM	Giganet Simplex LC Multimode Adaptor